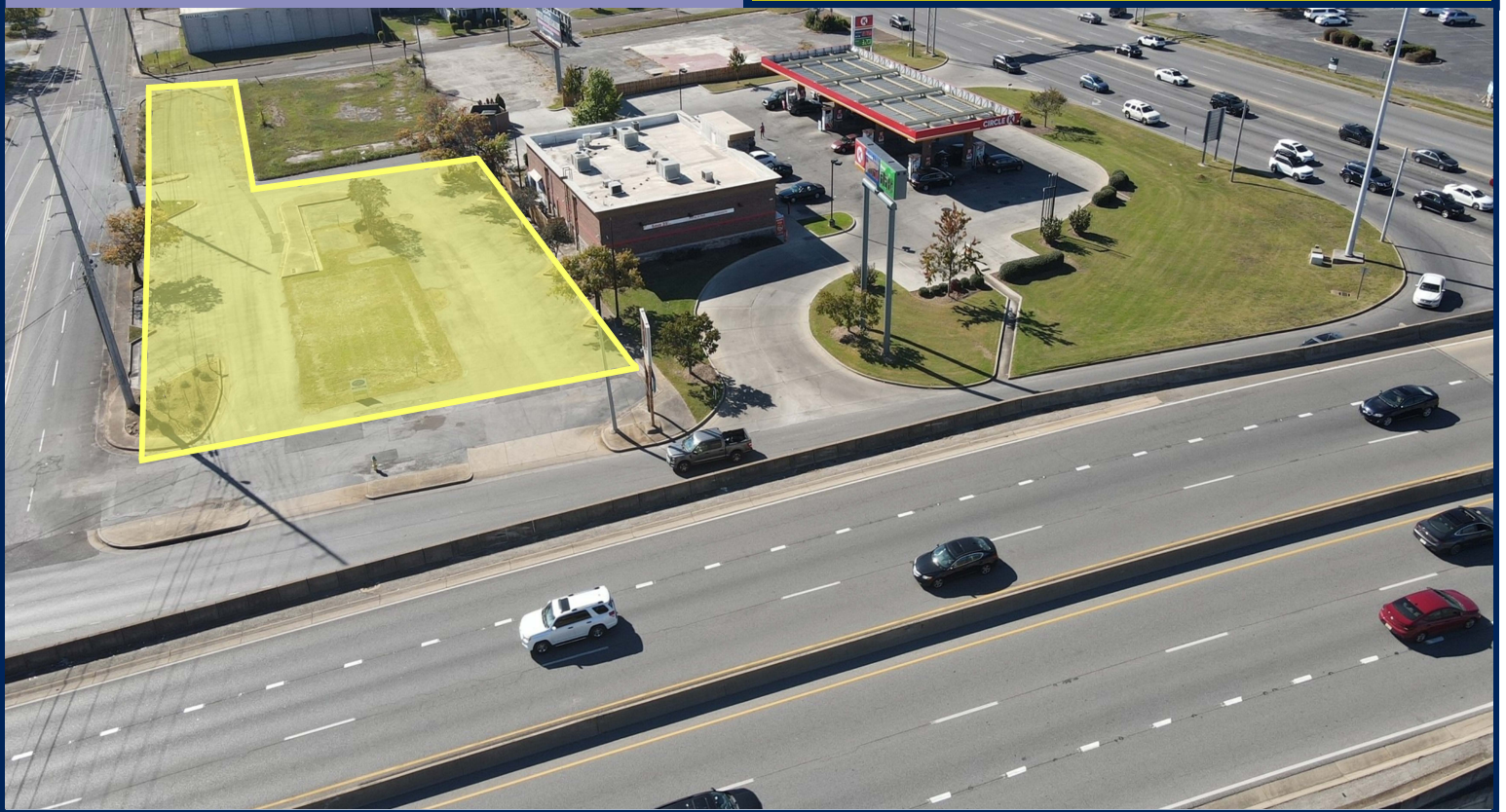




# FOR SALE

Frontage on Memorial Parkway

**1 acres +/-  
\$578,000.00**



***903 Memorial Parkway NW, Huntsville, AL 35801***

## HIGHLIGHTS

- Prime area for development
- Frontage on Memorial Parkway NW
- Visible from University Drive
- High Traffic Count
- Corner Lot
- Zoned C-4
- 3 Potential entryway points

**Interested? Give us a call!**

***JOHN D. BLUE & JONATHAN PRINCE***

**Cell Phone:**

**John D. Blue: 256-527-4407**

**Jonathan Prince: 256-508-9127**

**Email:**

**[john.d.blue@johnbluerealty.com](mailto:john.d.blue@johnbluerealty.com)**

**[jonathan.prince@johnbluerealty.com](mailto:jonathan.prince@johnbluerealty.com)**

**Mailing Address**

**P.O. Box 18573  
Huntsville, AL 35804**

**Street Address**

**218-B Randolph Ave. SE  
Huntsville, AL 35801**

Although the Broker has used reasonable care in obtaining data, this material is submitted without representation or warranty, express or implied. All information is subject to change by the Owner as to price or terms, to prior sale or lease, to withdrawal of the property from the market, and other events beyond the control of the Broker.

### Downtown Huntsville

